



Frog Hoppers Activity Booklet

Your Name: \_\_\_\_\_

## ***Your Frog Hoppers Mission Checklist:***

*Colour in each Dragonfly as you complete each mission!! Good luck!*



Do you know what a watershed is?



Do you know where the Swift Current Creek begins  
AND ends?



Riparian Areas



Life stages of a Frog



Difference between a Mule Deer & Whitetail Deer  
Antlers



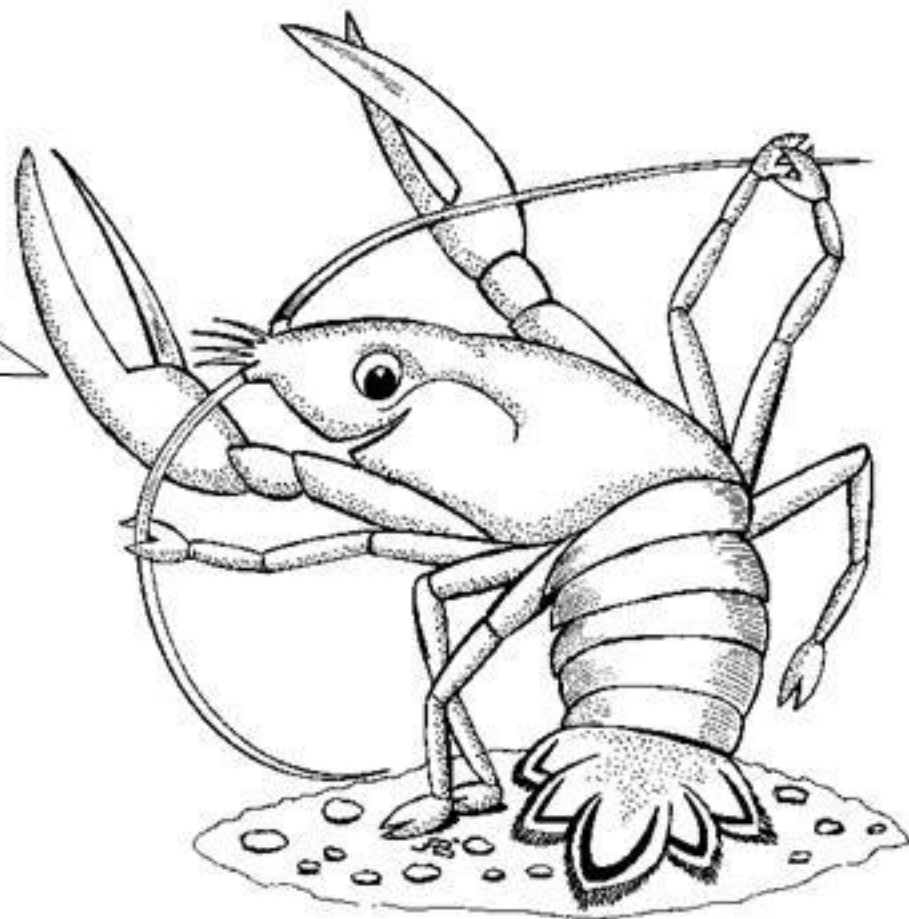
Ways to Conserve Water



Fill out Frog Hoppers Steward Certificate!

# Frog Hoppers Activity Booklet

Hi! I'm Carl the Crayfish!  
You can find me hiding  
underneath rocks in the  
creek! I'll also be hiding  
somewhere in this booklet  
see if you can find me!



- At the end of this booklet you will have what it takes to be a Certified Frog Hoppers Steward for the creek!
- Colour in each picture as you go along and learn more about the Swift Current Creek Watershed!

# The Swift Current Creek Watershed

- A **watershed** is an area of land that when rain falls or snow melts, the water runs into a river or lake.
- The Swift Current Creek starts at **Cypress Hills** and drains into the **South Saskatchewan River**.



# Riparian Areas

❖ The **Riparian area** is the grassy, green strip of land that follows along the edge of the creek.

❖ It includes many different trees, grasses, shrubs and other grassy plants.

❖ **What does a Riparian area do for the creek?**

❖ They help keep the creek clean by acting as a filter and preventing erosion along the bank of the creek.

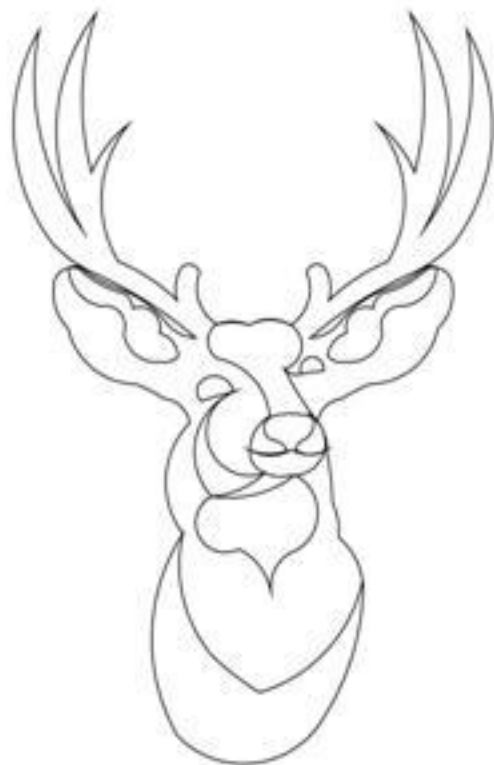
❖ Riparian areas also provide a **habitat** (which means home) for many different animals!



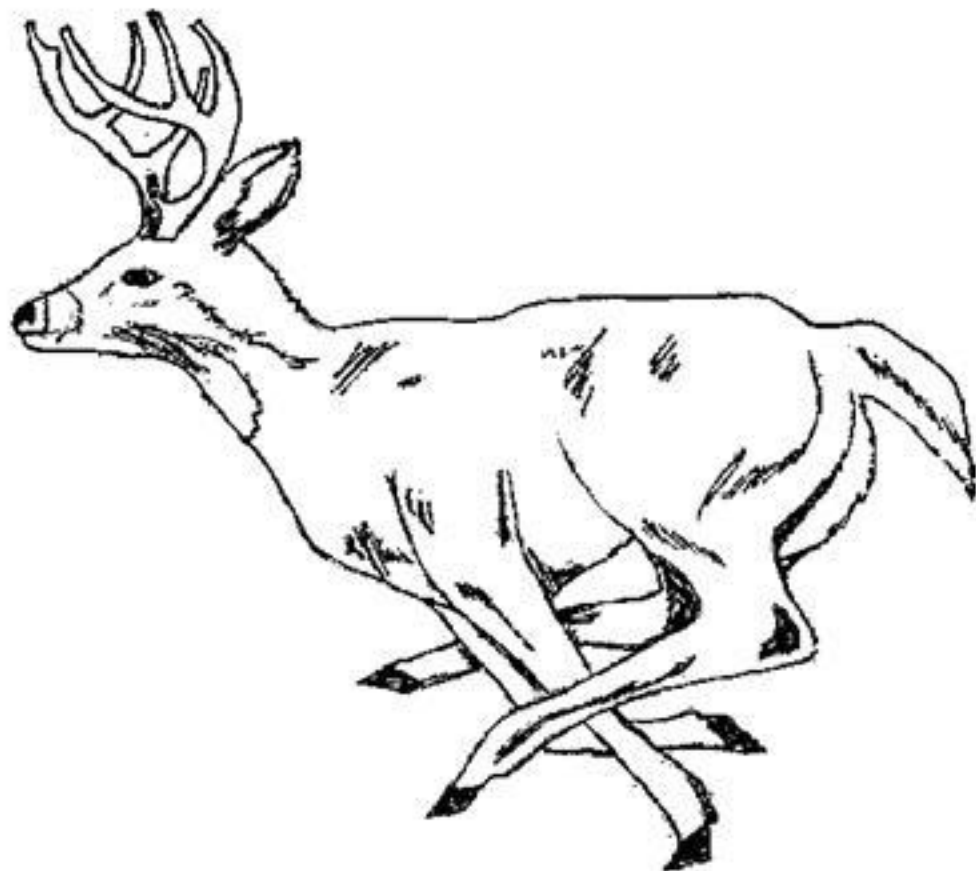
❖ Colour in the picture and see if you can find a **deer**, **dragonfly** and **mayfly larvae** (it has 6 legs)

# What is the difference between Whitetail Deer and Mule Deer antlers?

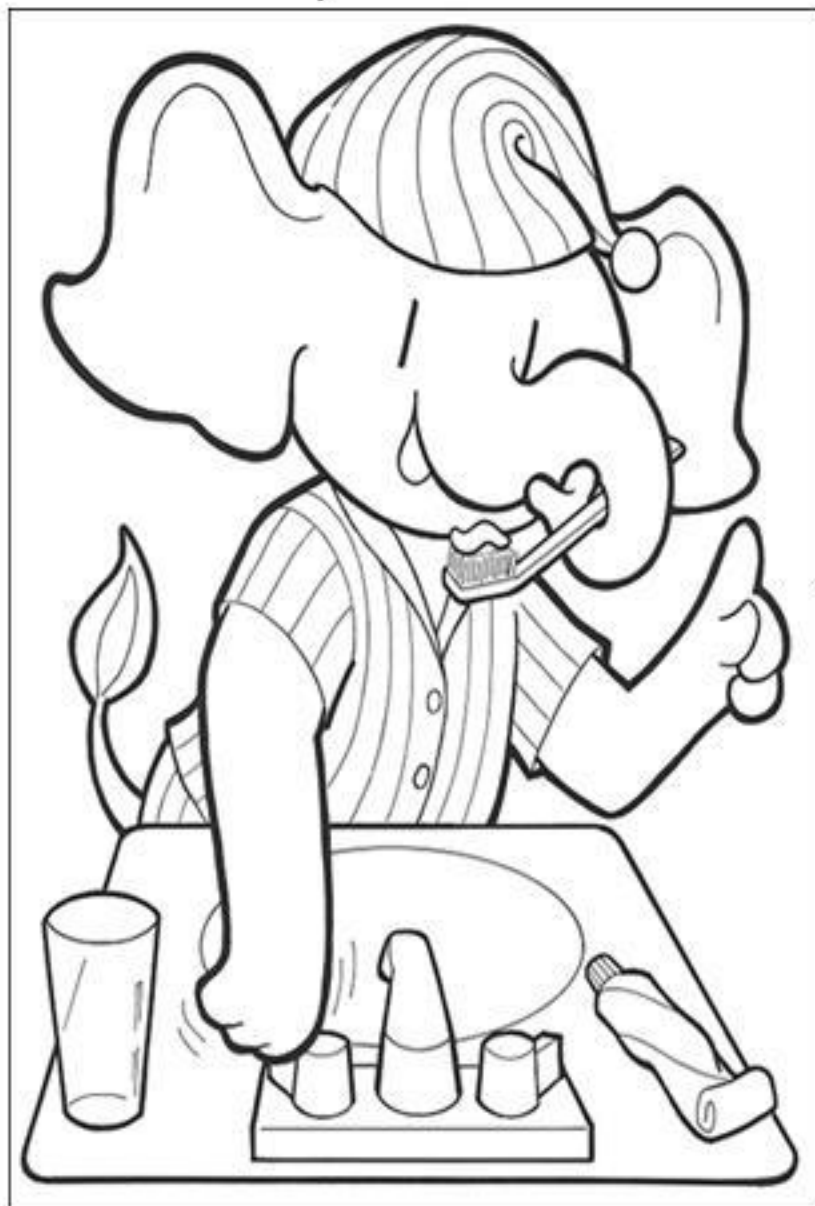
A Mule deer's antlers are **forked antlers**; they have 2 main branches.



A Whitetail Deer's antlers are **one-branched antlers** with spikes coming up from it.



# What you can do **EVERDAY** to conserve water!



**Conserve** means to save, to protect from loss.

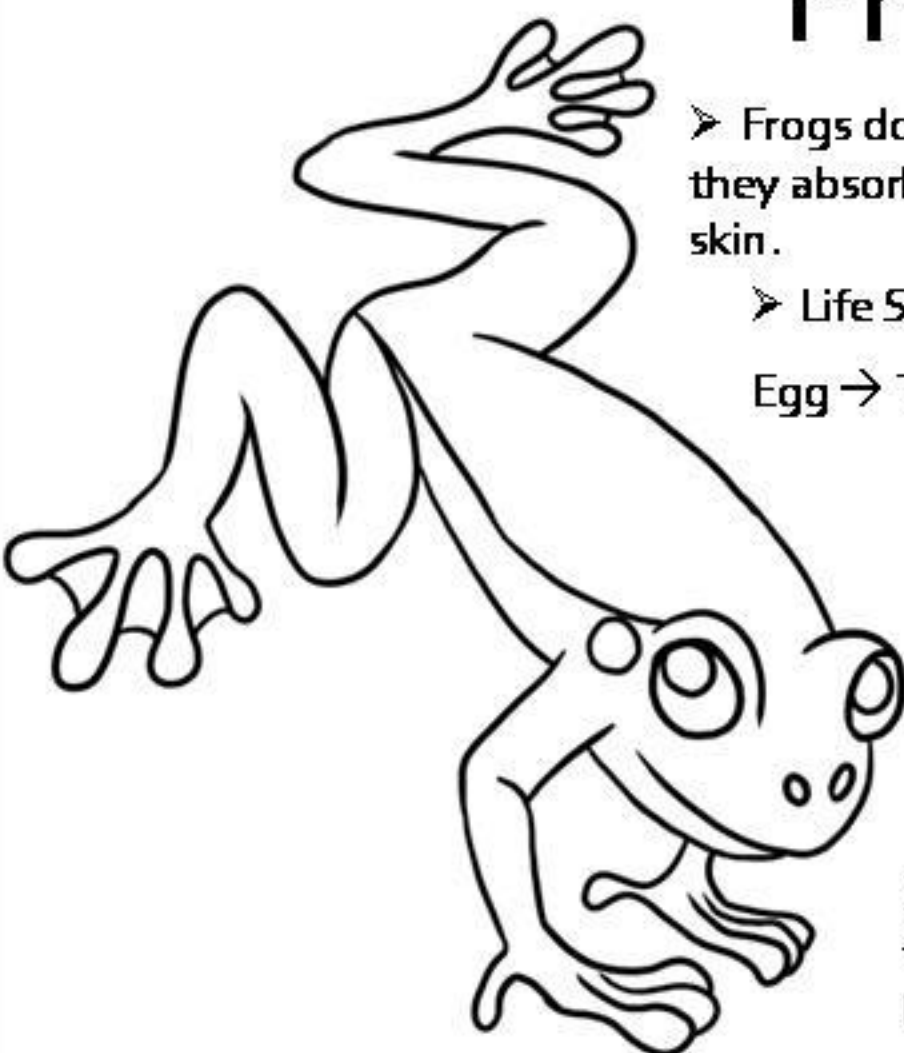
**If you have any more ideas on how to conserve water write them down here!**

- Take shorter showers
- Turn off tap when brushing your teeth





# Fun Facts about Frogs



➤ Frogs don't drink water, they absorb it through their skin.

➤ Life Stages of a frog:  
Egg → Tadpole → Adult

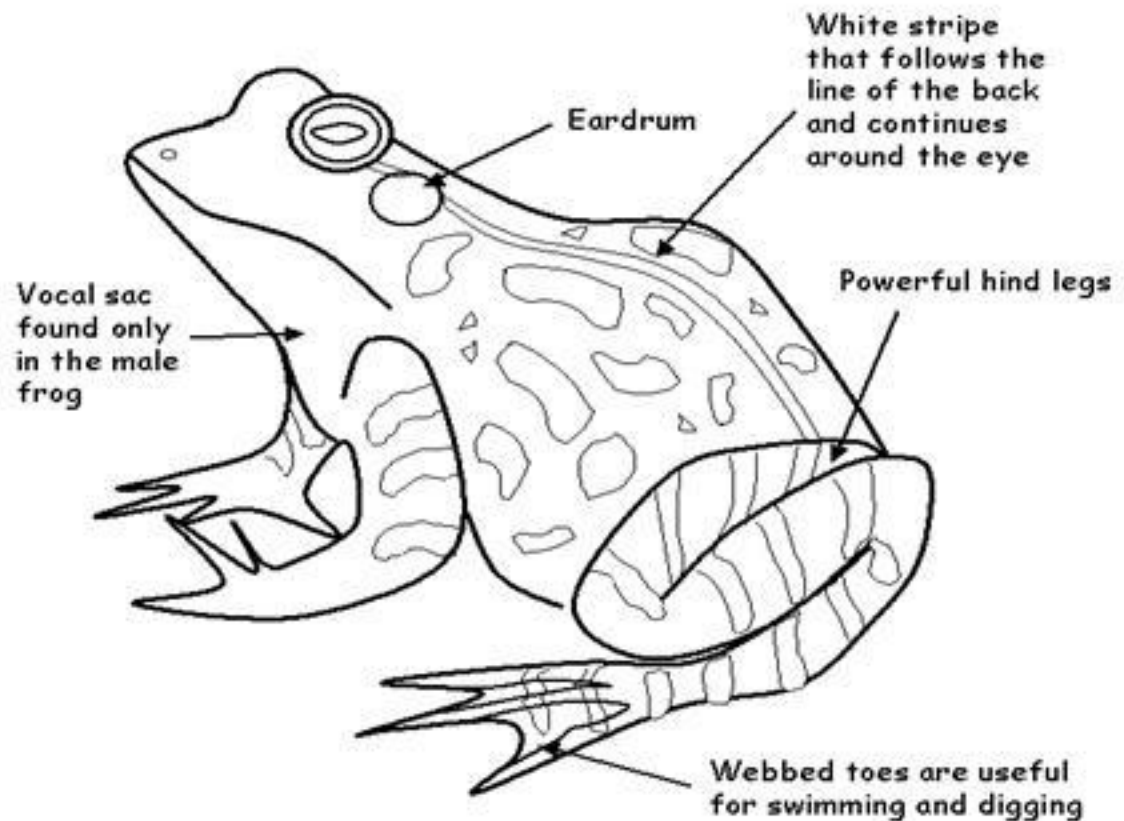
➤ A group of frogs are called an **army** of frogs.

➤ They are amphibians which means they have two-lives.

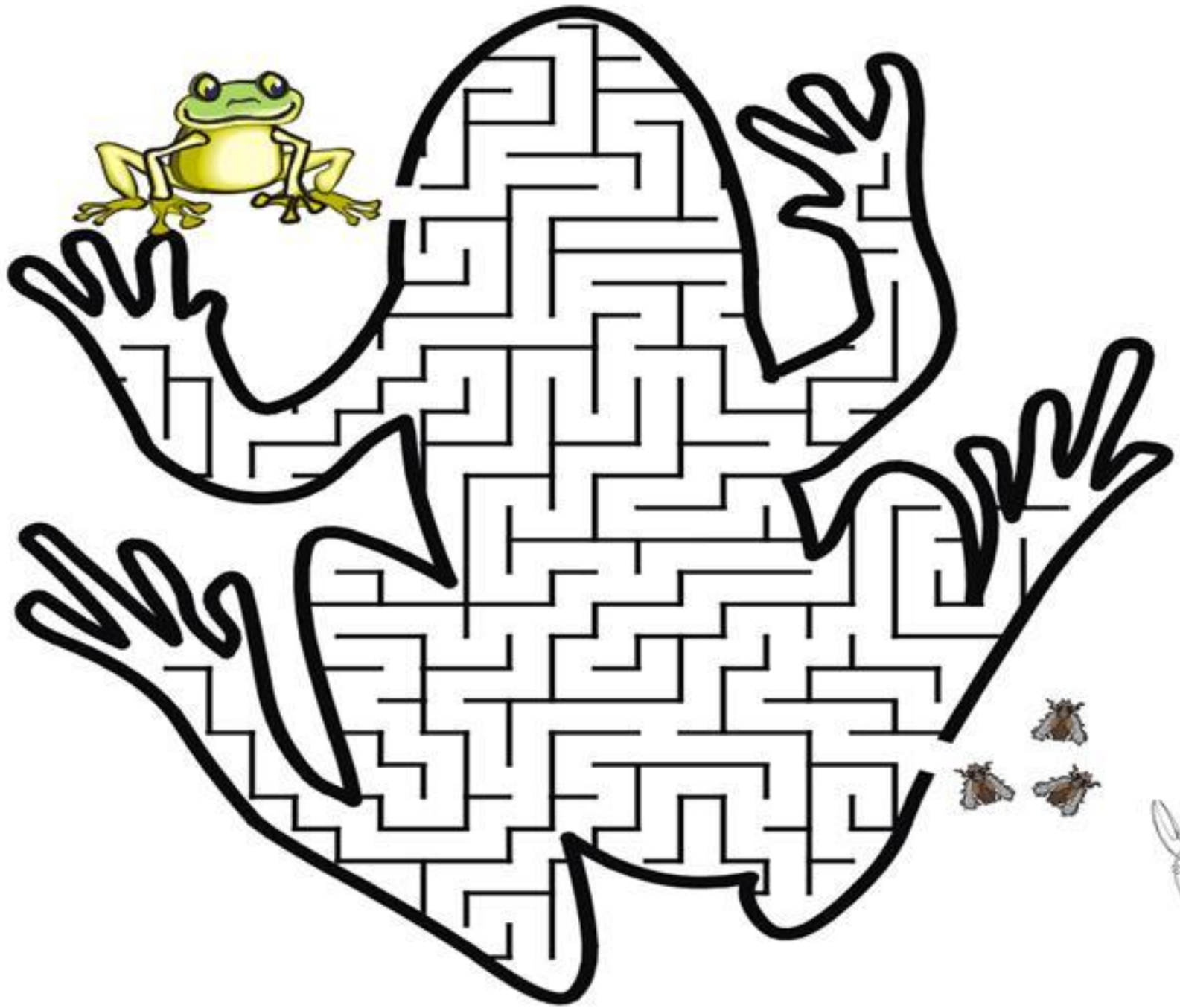
➤ A frog's tongue is attached to the front of their mouth rather than at the back like humans.



# More Frog Facts



**Northern Leopard Frog:** If you live in Canada this is the frog that you are most likely to see! The Leopard frog is also known as the *Grass frog* and *Meadow frog*. They are grass-green and covered in dark green or brown leopard-like spots with stripes on their legs. They grow to 2-5 inches (50-130 mm).



J J M Y Q G H D R Y U P K L J F  
 X J F P N D L P L X Y H X G X L  
 G M Z G H A Z L F R I V E R C O  
 R B K R T C A Y K C E Q R J A O  
 I R P I I F H U W X A H G L H D  
 U M M V R L J A F D T M K U O W  
 Z F J E S V N D N U Q E A P Z G  
 P E T R L H B I O N D C D Z V T  
 Z A O B M F X M D E E Q D W O M  
 W H Q A V R E P B E E L N E E N  
 M X X N L G A J X R S T R E A M  
 U I E K D L N P S U L T Y B S R  
 X S P I Z I X F I N Y P V N E G  
 T O R P R M L L L D I D E C P A  
 D B Q T V W H O V X S L R L Q M  
 G Z W J N L X W N I V U E L F L  
 U D K E K G F M I A O G B P P Z  
 P Q R W D W R J X S C N J H B D



- |        |           |           |
|--------|-----------|-----------|
| River  | Dry up    | Bed       |
| Stream | Flood     | Channel   |
| Source | Riverbank | Waterfall |
| Flow   | Rapids    | Bridge    |