



# SWIFT CURRENT CREEK *Watershed Stewards*

## PRODUCER HIGHLIGHT - DWANE MORVIK

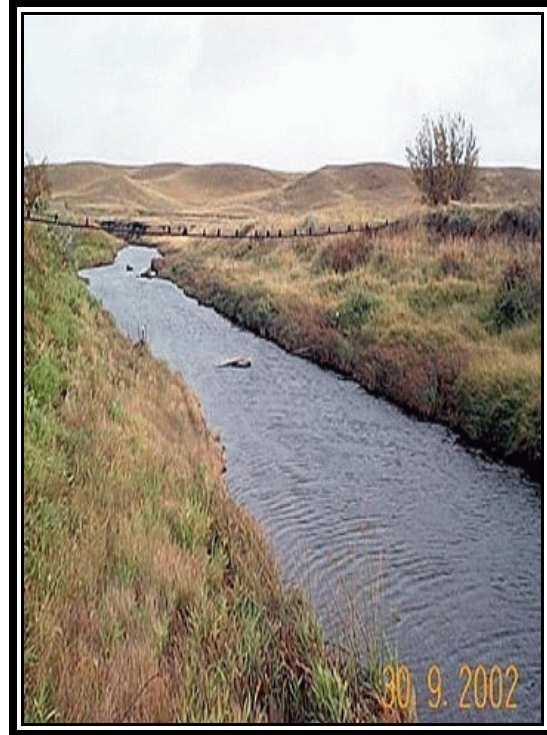
**WHO:** Dwane Morvik

**WHERE:** Adjacent to the Frenchman River Valley, RM of White Valley No. 49.

**WHEN:** Spring 2002

**WHY:** The sheep preferred to graze native grasses along the river resulting in overgrazing and trampling of the river banks, which increased erosion and sedimentation into the river. Dwane seeded tame grass on the uplands a half-mile away from the river, and wanted to force the sheep to graze this grass during the spring and summer allowing the riverbanks and lowlands to re-establish.

**WHAT:** A water supply was not available on the upland tame pasture, so an underground pipeline was installed. The lowlands pasture was fenced off to form a fall grazing and



Later in Dwane's Project

**BENEFITS:** Dwane was able to control livestock access to the river, maintain good vegetation throughout his pastures, reduce erosion and sedimentation and improve water quality for downstream users.

**COST:** Half of the cost was paid by Saskatchewan Wetlands Conservation Corporation (SWCC).

Information Source: Electronic presentation by Dwane Morvik entitled "SWCC Pipeline Project". Summary by: Jenna King and Bob Springer.



Early on in Dwane's Project